

No Room For Mary

Peter Canwell

Gentle Waltz ♩ = 80

D F#m Em

4

Long a - go two stran - - gers came to
 walked the streets of Beth - le -
 inn they slow - - - ly made their

4

rit. *a tempo*

A7 A7sus D Em A7

7

town. They trav-elled far just like the Bi - ble
 hem. He had to find A place some-how, some-
 way. But it was full no room at all that

7

D Am7 D7 G A/G

No Room For Mary

11

says _____ And then _____ they
 where. _____ He He knocked _____ on
 day. _____ "There's just _____ one

D Am7 D7 G

14

sought all ov - er Beth - le - hem To find a room for the
 doors, But no - one seemed _____ to care; When Ma - ry smiled Jo - seph
 place" the kind inn - keep - er said, "It's all I have, but it's

A/G D B sus B Em7

18

night where they could stay. No
 said in si - lent prayer;
 yours - my cat - tle shed."

A7 D G A7sus A7 D

rit. *a tempo*

No Room For Mary

22

room _____ for Ma - - - ry No - - - where _____ at

22

D G A D F#m

27

all. _____ But the world came to love _____ the

27

G Em A7 D Bm

31

child from a - bove who was born in a cat - - tle

31

Em Gm D/A Em A7sus

No Room For Mary

35 1, 2.

stall.

Jo - seph
To the

D D G A7sus A7

39 3

stall.

rit. molto

G G m6 D

The Inn At Bethlehem

Peter Canwell

Moderato ♩ = 120

F G m C7

5

1. Joseph: Inn keep - er sir, have you a bed? where we can rest our

5

F C7 C7

8

sleep - y heads. Mar - y my wife must rest a - while,

8

F F C7

The Inn At Bethlehem

11

for we have trav - elled man - y'a mile. Inn keeper All of my rooms are

C7 F F F7

14

full kind sir, sor - ry I can't help you. This is our bus - y

B \flat Gm C7 F F F7

18

time of year, there's no _____ thing I _____ can do. _____

B \flat B \flat m F C7 F

The Inn At Bethlehem

22



2. Joseph: Inn keep - er sir, don't turn a - way, sure - ly you know some -

22



F

C7

C7

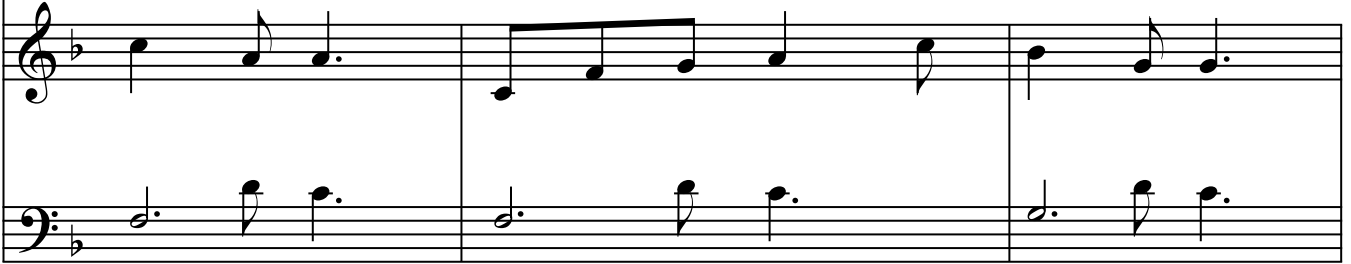
7 7

25



where to stay. Well there's a place but ve - ry small.

25



F

F

C7

28



yes, you can share my cat - tle stall. All: While all the world was

28



C7

F

F

F7

The Inn At Bethlehem

31

fast a-sleep, on that first Christ - mas morn. There in a stall in

B \flat Gm C7 F F F7

35

Beth - le - hem, the ho — ly ba - be was born.

B \flat B \flat m F C7 F

The Broken Hearted Donkey

Peter Canwell

Steadily - not too fast ♩ = 100

sim.

E \flat

4

Clip-pet-y clop, clip-pet-y clop, got to keep go-ing on and on to

4

E \flat

7

Beth - - - le - hem. Clip-pet-y clop, I'm read-y to drop,

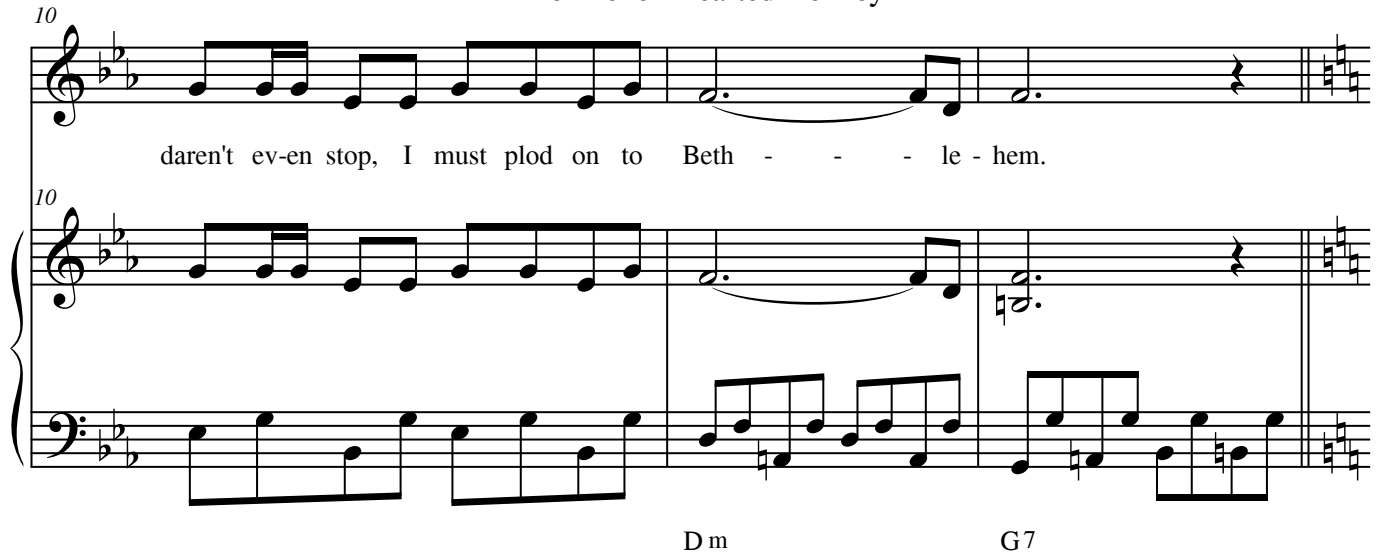
7

D m

E \flat

The Broken Hearted Donkey

10

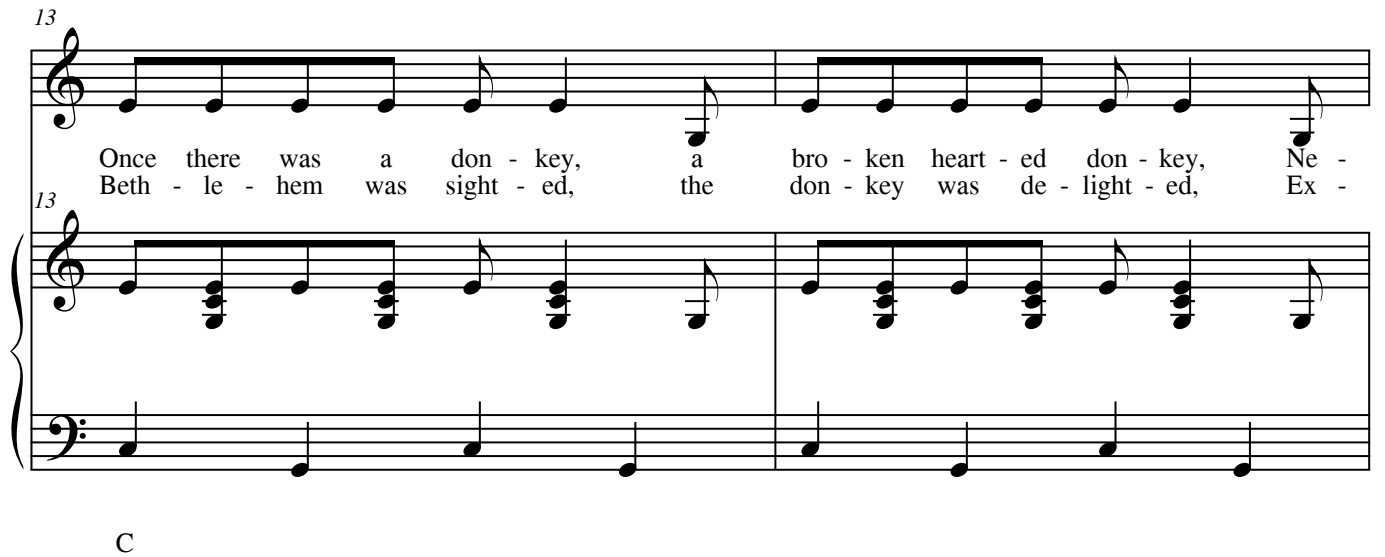


daren't ev-en stop, I must plod on to Beth - - - le - hem.

10

D m G7

13

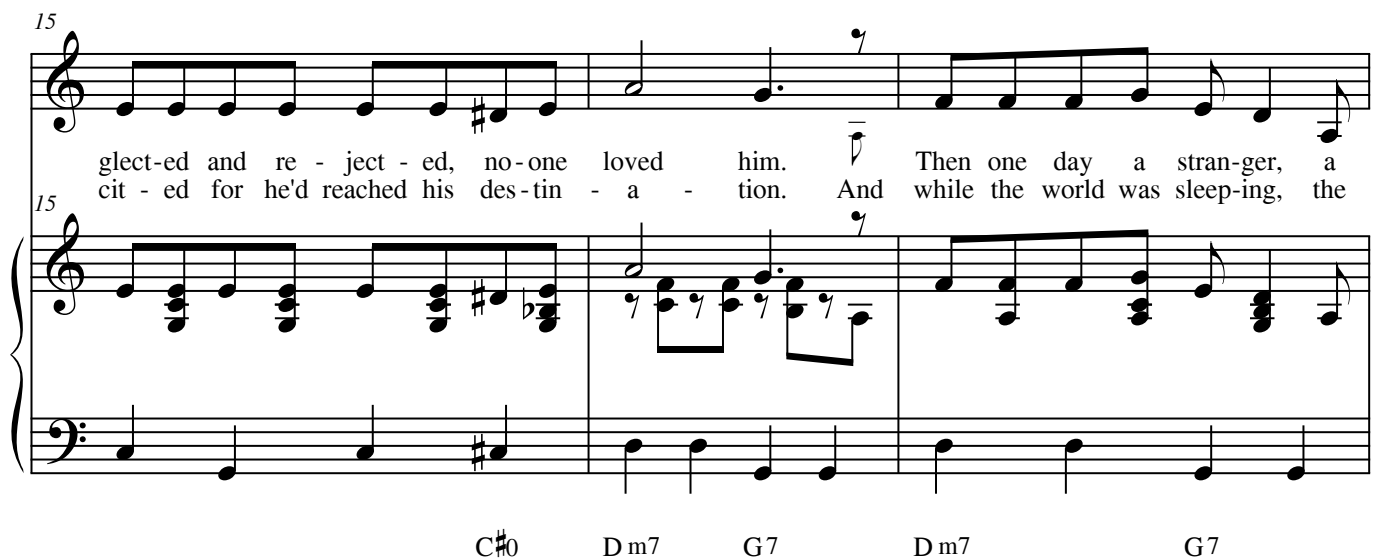


Once there was a don - key, a bro - ken heart - ed don - key, Ne -
Beth - le - hem was sight - ed, the don - key was de - light - ed, Ex -

13

C

15



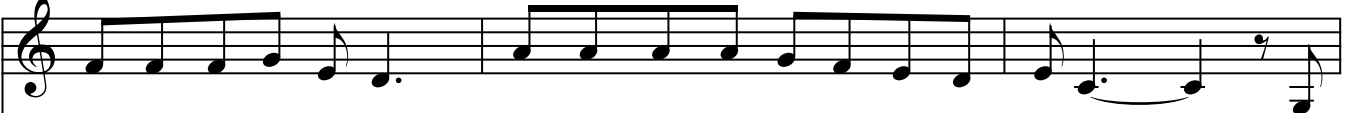
glect-ed and re - ject - ed, no-one loved him. Then one day a stran-ger, a
cit - ed for he'd reached his des-tin - a - tion. And while the world was sleep-ing, the

15

C#0 D m7 G7 D m7 G7

The Broken Hearted Donkey

18



kind and gen - tle stran - ger said, "I need you for a spe - cial jour - ney." _____ And
 an - gels were a - keep - ing con - stant watch on Ma - ry's new cre - a - tion. _____ And

18



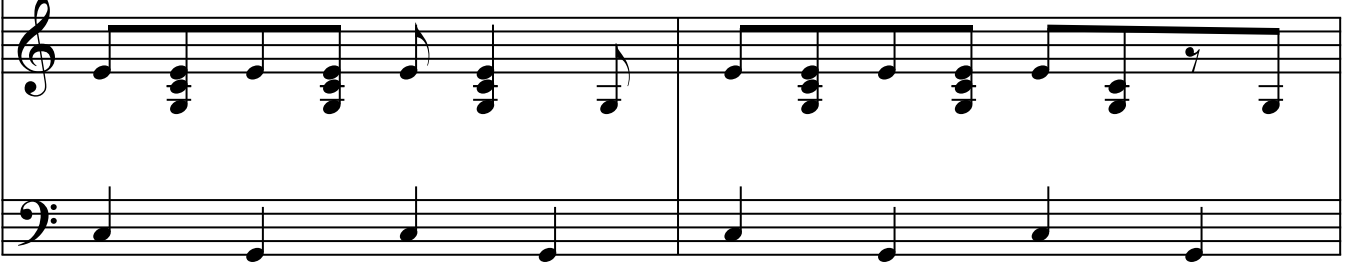
Dm7 G7 Dm7 G7 C

21



who's the love - ly la - dy who stroked my face and smiled, Be -
 when the don - key saw _____ the ba - by in the straw,

21

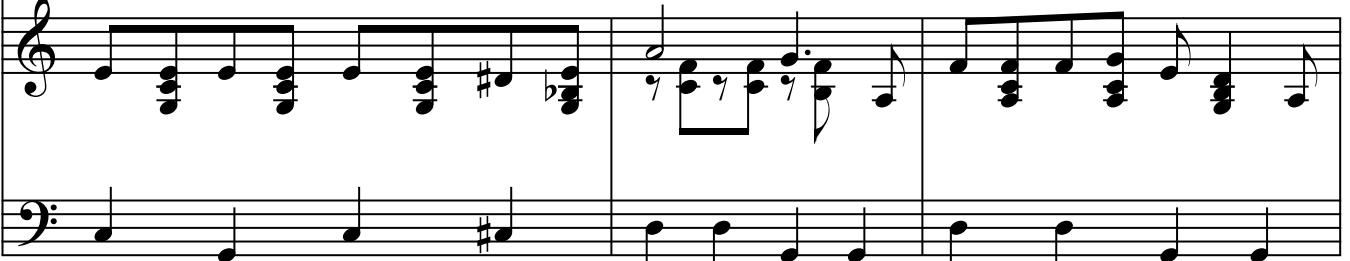


23



friend - ed me and whis - pered please go stead - y? And for my love - ly la - dy who
 Ma - ry's ho - ly child the King of Heav - en, He nest - led to his side, with

23



C#0 Dm7 G7 Dm7 G7

26

rides up - on my back — I'll tread with care down ev - 'ry moun-tain track. —
 joy knelt down and cried — with hap - pi - ness for all the help he'd giv - en. —

26

D m7 G7 D m7 G7 C

29

"Who do I car-ry?" said the don-key with each stride. "Who do I car-ry on this

29

A m E m A m E m F C D m7

32

long, long, ride?"

32

G7 C E \flat

D.S. al Coda

35 *Coda*

Vocal line for measures 35-37. The melody consists of eighth and quarter notes in a minor key.

"Look who I car-ried," said the don-key full of pride, "I car-ried Ma-ry on the

Piano accompaniment for measures 35-37. The right hand plays a rhythmic pattern of eighth notes, while the left hand provides harmonic support with chords.

A m E m A m E m F C Dm7

Vocal line for measures 38-41. The melody is mostly sustained notes, with a long note in measure 41.

long, long ride." _____

Piano accompaniment for measures 38-41. The right hand features a rhythmic pattern of eighth notes with grace notes, while the left hand plays a steady bass line.

G7 C V

Angels' Alleluia

Peter Canwell

Brightly ♩ = 120

Glo - ri - a

B \flat Eb7 B \flat Eb7 B \flat

6

in ex-cel - sis Glo - ri - a in ex-cel - sis de - o, For

E \flat E \flat /F F7 B \flat E \flat E \flat /F F7 E \flat

10

Je - sus Christ has been born In Beth-le - hem, this Christ-mas morn.

Cm B \flat Cm Dm7 E \flat A \flat B \flat